



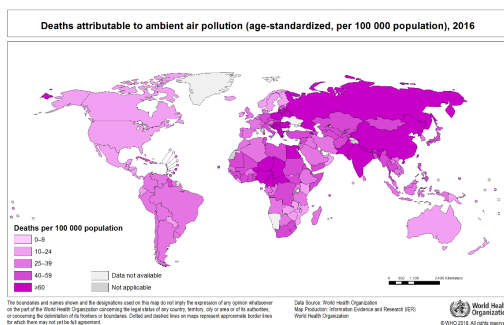
A CAG Initiative

stopppwatch

Educating & Informing Stakeholders on Energy, Environment, and Thermal Power Plants

February 2019

Welcome to the Stop(p)watch newsletter! This is our monthly dispatch of updates and insights on issues surrounding coal-based power plants, and the environment in general



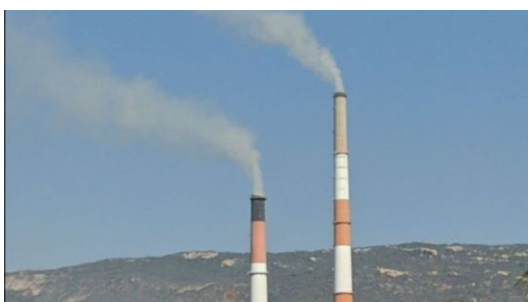
What in air is killing you? A sectoral analysis offers clues

Ambient air pollution is a major threat to health and well-being of the global population. This editorial delves into the contribution of different sectors to the pollutants in the air we breathe.



India's coal subsidies are nearly 400 times the MoEFCC's budget

Coal continues to be the king in India, with coal subsidies increasing by 2 % from 2014, even as those for oil and gas have reduced.



Coal power plants in India are the unhealthiest in the world

Coal power plants in India continue to emit more pollutants than their global counterparts. This exposes Indians to serious health hazards.

PM2.5 Legend		WHO target	Good	Moderate	Unhealthy for sensitive groups	Unhealthy	Very unhealthy	Hazardous	Unit: $\mu\text{g}/\text{m}^3$											
Rank	City	2017 AVG	2018 AVG	JAN	FEB	MAR	APR	MAY	JUN	JUL	AUG	SEP	OCT	NOV	DEC					
1	 Gurugram, India	145.6	135.8	133.6	106.7	108.2	116.3	130.6	210.8	57	69.6	66.9	178.3	197.3	208.2					
2	 Ghaziabad, India	144.6	135.2	255.1	153.9	113.7	88.1	108.6	134.9	48	43.2	49.1	161.6	211.3	247.2					
3	 Faisalabad, Pakistan	-	130.4	222.1	141.6	89.2	138.7	69.7	81	48.9	50.3	54.9	129.9	184.2	275.3					
4	 Faridabad, India	123	129.1	178.8	135.7	87.5	97.6	133	134.8	61.7	74.5	71.2	150.1	201.9	202.6					
5	 Bhiwadi, India	-	125.4	-	-	-	150.7	152	176.8	63.5	83.6	70.3	126.8	154.7	177.6					
6	 Noida, India	134	123.6	232.2	143.6	98.8	75.8	75.6	123.5	40.7	41.5	62.6	138.4	200.5	228.1					
7	 Patna, India	118.5	119.7	198	143.3	113.9	87.4	74.4	114.3	44.1	54.3	63.5	113.1	202.3	243.1					
8	 Hotan, China	91.9	116	89	70.2	186.4	307.9	182.4	108.5	124.9	91.9	62.8	43.4	47.2	70.4					
9	 Lucknow, India	119.2	115.7	214.4	130.2	105.7	92	101.3	140.6	34.8	34.8	45.5	120.6	187.2	180.3					
10	 Lahore, Pakistan	133.2	114.9	229.9	127	91.8	66.2	66	60.9	58.8	48.2	55.3	141.5	181	251.1					

IQAir AirVisual's Report on the World's Most Polluted Cities (PM2.5)

Lucknow is the only city among the top 10 polluted cities to have at least a month of moderate air quality



Use our monitoring [tool](#) to see if the plant is adhering to prescribed standards.

For other tools and tips to strengthen your campaigns, see [here](#).

About CAG:

Citizen consumer and civic Action Group (CAG) is a non-profit, non-political, professional organization working towards citizen's rights in consumer and environmental issues and promoting good governance including transparency, accountability, and participatory decision-making.

About Thermal Watch:

An initiative to assist local communities around existing and proposed coal-fired power plants on the Environmental Impact Assessment (EIA) process, by developing and disseminating information toolkits that they can use. In addition to that, we create awareness about the existing compliance processes to push for better compliance by power plants to prescribed environmental standards.

If you would like anyone to receive our newsletter, ask them to write to us, and we will be happy to add them to our mailing list.

We would love to hear from you! If you have any feedback, please drop us a line at tpp@cag.org.in.

- Team Thermal Watch

Copyright © 2018 /CAG, All rights reserved.

Our address is:

New No. 246 (Old No. 277B), TTK Road, (JJ Road), Alwarpet, Chennai 600 018

Ph: 044 - 2499 4458 / 2466 0387

Want to change how you receive these emails?

You can [update your preferences](#) or [unsubscribe from this list](#).

This email was sent to <<Email Address>>

[why did I get this?](#) [unsubscribe from this list](#) [update subscription preferences](#)

Citizen consumer and civic Action Group · New #246 (Old #277B), TTK Road (J.J. Road), · Alwarpet · Chennai 600018 · India